

**The Trans-Siberian Express Winter
Wonderland Route
Moscow to Vladivostok
2020**



The Trans-Siberian Express Winter Wonderland

**From Moscow to Vladivostok aboard the luxury
Golden Eagle private train**

One eastbound departure in 2020 – Private Rail Journey – 15 Days

February 13-27, 2020

Russia's far-flung Trans-Siberian rail line is nearly 6,000 miles of track laid through cities, villages, taiga, mountains and tundra. From the western capital of Moscow past the Urals into Asia and through Siberia's vast stretches of wilderness to the Pacific Ocean in the east, the Trans-Siberian rolls across a third of the globe.

On this winter epic, begin in magnificent Moscow, admiring its iconic Red Square and St. Basil's Cathedral. Board the luxury Golden Eagle Trans-Siberian Express private train, and make your first stop in multi-ethnic Kazan. At the World Heritage Site of Lake Baikal, enjoy winter fun on the ice, fishing, dogsledding or snowmobiling. Dip down into Mongolia for lunch in a nomadic ger in the capital, Ulaanbaatar, before disembarking in the Pacific Rim port city of Vladivostok.

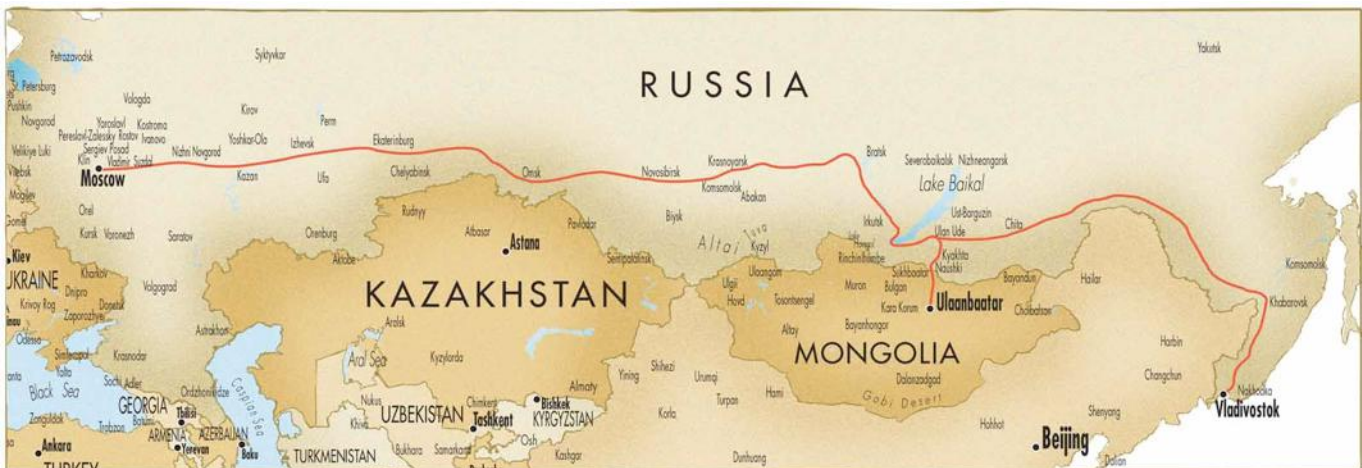


Daily Itinerary

Day 1, Thursday, February 13	Arrive Moscow, Russia
Day 2, Friday, February 14	Moscow
Day 3, Saturday, February 15	Kazan
Day 4, Sunday, February 16	Ekaterinburg
Day 5, Monday, February 17	Novosibirsk
Day 6, Tuesday, February 18	Aboard train
Day 7, Wednesday, February 19	Irkutsk
Day 8, Thursday, February 20	Lake Baikal
Day 9, Friday, February 21	Ulan Ude
Day 10, Saturday, February 22	Ulaanbaatar, Mongolia
Day 11, Sunday, February 23	Aboard train, Russia
Day 12, Monday, February 24	Aboard train
Day 13, Tuesday, February 25	Aboard train
Day 14, Wednesday, February 26	Vladivostok
Day 15, Thursday, February 27	Vladivostok



Note: This train also runs westbound from Vladivostok to Moscow; see page 13 for dates.



Tour Features

- Enjoy the comfort and efficiency of your own private en suite cabin on the *Golden Eagle Trans-Siberian Express* luxury train.
- Pack and unpack your bags only at the beginning and the end of your epic journey.
- Survey a series of fascinating cities along the rail line.
- Get a true picture of the scale and scope of the country you are traversing.
- Join travelers from around the world to enjoy the casual and relaxed atmosphere aboard the private train, dining in luxury and chatting over drinks in the lounge.
- Relax deeply as you are carried into another land, a world away from home.

Tour Highlights

Moscow	Moscow Kremlin and Red Square (UNESCO World Heritage Site), St. Basil's Cathedral
Kazan	Capital of the Republic of Tatarstan, Kazan Kremlin (UNESCO World Heritage Site), Qol Sharif Mosque
Ekaterinburg	Europe/Asia Obelisk, Church on the Blood
Novosibirsk	Russia's largest Opera House
Irkutsk	Decembrist Museum with concert, classic wooden architecture
Lake Baikal	World's deepest and oldest lake (UNESCO World Heritage Site), winter fun – ice-fishing, dogsledding or snowmobiling
Circumbaikal Railway	The most scenic stretch of the original Trans-Siberian Railway
Ulan Ude	Russian Old Believers, or Trans-Baikal <i>Semeiskie</i> (noted on UNESCO's List of the Intangible Cultural Heritage of Humanity")
Ulaanbaatar	National History Museum, lunch and cultural performance in a nomadic ger
Vladivostok	Waterfront, the S-56 submarine, Eagle's Nest observation platform

Daily Itinerary

Day One, Thursday, February 13 **Arrive Moscow, Russia**

Passengers are met at the Moscow airport and transferred to the five star Four Seasons (or another of Moscow's leading hotels) for a one-night stay. The Soviet flag flew for the last time on 25 December 1991, and since then central Moscow has been transformed. Moscow today is a booming metropolis, dignified yet dynamic, where ancient churches sit shoulder to shoulder with 21st century financial institutions, and where the new high-rise commercial district of Moscow-City is changing the face of the city forever. Meet fellow passengers at the **welcome reception and dinner** this evening.

Meals: Aloft, D – *Four Seasons or similar*

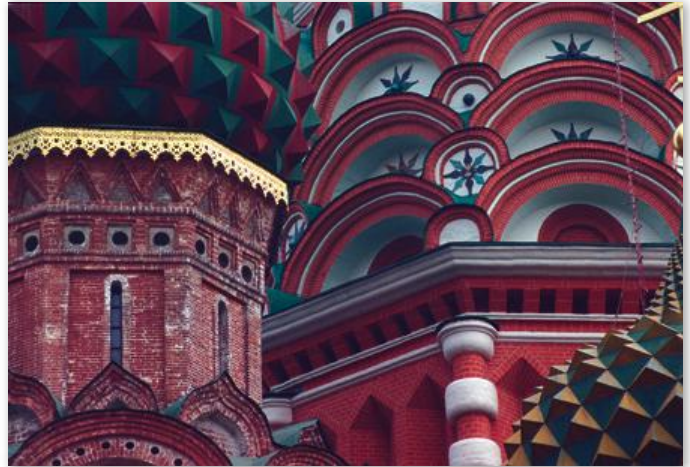


Day Two, Friday, February 14

Moscow

Today, tour the classic sights of this 870-year-old capital city, including expansive **UNESCO-listed Red Square** with its imaginatively decorated **St. Basil's Cathedral** and the venerable **Kremlin** with its imperial palaces. You may wish to take a tour of the **Tretyakov Gallery** rather than visiting Red Square today. Depart this evening aboard the luxury *Golden Eagle Trans-Siberian Express* private train.

Meals: B, L, D – Aboard the *Golden Eagle Trans-Siberian Express*



Day Three, Saturday, February 15

Kazan

Today a stop is made in **Kazan, the beautiful capital of Tatarstan on the Volga**. The Tatars, who make up a majority of the population, are actually Turkic Muslims with an ethnic makeup similar to that of early Bulgarians. Leo Tolstoy spent five or six years here in Kazan, where Orthodox churches and Muslim mosques are both found.

The **UNESCO-listed Kazan Kremlin** is the highlight of the city tour. Originally a fortress of the Golden Horde during the time of the Kazan Khanate, little of the original remains from this time. It is considered by UNESCO to be the **only surviving Tatar fortress in Russia**. Ivan the Terrible conquered Kazan in 1552 and built new walls on top of the older ones, adding the Annunciation Cathedral and razing the original Qol Sharif Mosque, now rebuilt. The entire ensemble shows the synthesis of the Tatar and Russian cultures.

Meals: B, L, D – Aboard *Golden Eagle Trans-Siberian Express* train

Day Four, Sunday, February 16

Ekaterinburg

Cross from Europe into Asia at **Ekaterinburg**. The cultural and architectural **influences of European and Asian civilizations come together here**, in one of Russia's largest cities. Founded in 1723 and named after Catherine I, Ekaterinburg is where the last czar, Nicholas II, and his family were placed under house arrest for months before the Bolsheviks executed them in July of 1918. Today, the **Church on the Blood** stands over the spot where Czar Nicholas II and his family were killed.

Meals: B, L, D – Aboard the *Golden Eagle Trans-Siberian Express*

Day Five, Monday, February 17

Novosibirsk

Today's stop in **Novosibirsk** allows time to explore the central part of the city, including a stop on Lenin Square, home to **Russia's largest Opera House**. With a population of roughly 1.6 million, Novosibirsk is the largest city in Siberia, and its industrial and scientific center. Novosibirsk did not exist before the Trans-Siberian railway was built, growing up around the place chosen for the rail line's Ob River crossing.



Nikita Khrushchev relocated his best scientists 30 km from here in 1959, in a special town built expressly for scientific research, called Academgorodok, or Academy City.
Meals: B, L, D – Aboard the Golden Eagle Trans-Siberian Express

Day Six, Tuesday, February 18

Aboard Train

Enjoy a **relaxing day onboard** the train as it heads east through the snowy Sayan Mountains.
Meals: B, L, D – Aboard the Golden Eagle Trans-Siberian Express

Day Seven, Wednesday, February 19

Irkutsk



Morning arrival in Irkutsk, the “capital” of Siberia. A tour today includes the major sights and museums of this cultured little city, including examples of the classic wooden architecture for which the area is known.

A highlight is a tour of the **Decembrist House Museum**. The Decembrists were a group of young officers who had served abroad during the War of 1812 and become advocates of democratic reform. In December 1825, they tried to force the Senate to sign a manifesto abolishing serfdom and instituting reforms. Their rebellion was quickly put down, and five of the leaders hanged. The rest were sentenced to forced labor in Siberia. Many of them, with their wives, settled in Irkutsk after their terms

were over, and brought with them education and culture. The House Museum of the Decembrists is in the former home of Sergei Volkonsky and his wife, Maria. Enjoy a **concert in the museum**.

Visit Zaimka (Hunters’ Lodge) to **experience an authentic Russian banya**, or steam bath, and enjoy traditional food and drink. (**Note**, the *banya* experience is at additional cost; please call for details.)

Return to the train this evening to continue the journey.
Meals: B, L, D – Aboard the Golden Eagle Trans-Siberian Express



Day Eight, Thursday, February 20

Lake Baikal

A spectacular part of the journey today is spent winding through tunnels and around cliffs along the shoreline of **UNESCO-listed Lake Baikal, the world's deepest and oldest freshwater lake**. The huge frozen lake with its clear ice is an awe-inspiring sight. Visit the shoreside Ice Festival to admire the elaborate ice sculptures.

A frozen Lake Baikal is the perfect location to experience the thrill of an ice ride. Board a hovercraft that crosses the lake to a spot where you can join locals ice-fishing, smoking freshly-caught fish, riding snowmobiles and running dogsleds.

Meals: B, L, D – Aboard the Golden Eagle Trans-Siberian Express



Day Nine, Friday, February 21

Ulan Ude

Arrive in Ulan Ude, capital of the Buryat Republic. Visit a **village of Old Believers**, who share a meal and treat travelers to a **concert featuring local singers and musicians**. Rebelling against Patriarch Nikon's 1652 reforms of the Orthodox liturgy and ritual, the Old Believers fled or were exiled to Eastern Europe and then to Siberia. In their isolated Siberian villages, these groups have been able to preserve their 17th century traditions, clothing, architecture, language and style of singing. In 2001, **UNESCO added** the culture and unique choral music of the Trans-Baikal Semeiskie – as they are called in Siberia – to its **“List of Intangible Cultural Heritage of Humanity.”**

Meals: B, L, D – Aboard the Golden Eagle Trans-Siberian Express



Day Ten, Saturday, February 22

Ulaanbaatar, Mongolia by charter flight

Fly today from Russia to **Ulaanbaatar**, the capital and the **political, industrial and cultural heart of Mongolia**.

Passing the central monument to Genghis Khan, the country's famed ancestor, learn about the nomadic life and customs at the National History Museum, followed by lunch in a traditional ger restaurant.

Meals: B, L, D – Aboard the Golden Eagle Trans-Siberian Express

Note: Winter rail schedules are quite unpredictable and may require some last minute scheduling changes. Due to this unpredictability, this program is likely to travel from Russia to Mongolia by private charter flight. The return flight from Ulaanbaatar will bring the group back to Siberia for an overnight onboard the train and to continue eastward.



Day Eleven, Sunday, February 23

Aboard Train, Russia

Siberia at its most remote and mysterious unfolds as the train enters the region of permafrost. Enjoy a **lecture or Russian language lesson.**

Meals: B, L, D – Aboard the Golden Eagle Trans-Siberian Express



Day Twelve, Monday, February 24

Aboard Train

Following the Shilka and Amur River, the train is never far from the Chinese border. Enjoy a **relaxing day onboard.**

Meals: B, L, D – Aboard the Golden Eagle Trans-Siberian Express

Day Thirteen, Tuesday, February 25

Aboard Train

During the last full day onboard the Golden Eagle Trans-Siberian Express, the train reaches the **easternmost point of the journey**, passing through Khabarovsk, where it crosses the Amur River. Enjoy a final dinner

onboard the train.

Meals: B, L, D – Aboard the Golden Eagle Trans-Siberian Express

Day Fourteen, Wednesday, February 26

Vladivostok

Arriving in Vladivostok, **spot the obelisk marking the official end of the Trans-Siberian line** and the conclusion of an epic journey across the world's largest country. In 1860, the Russian Empire annexed an important piece of land from China – a slice of Pacific seacoast from the Amur River down to Korea. Count Muravyev-Amurskii, exploring the coastline in the steamer *Amerika*, chose Golden Horn Bay to be the new Pacific port. The place was named Vladivostok, meaning “Ruler of the East.” It turned out to be an ideal deepwater harbor with an average of 295 ice-free days a year.

A city tour includes the principal attractions of this once “closed” Russian town that has grown from a naval outpost to a thriving city, including the S-56 submarine. Drive up to **the Eagle’s Nest observation platform**, from which the whole city of Vladivostok, and Golden Horn Bay can be admired on a clear day or night.

Transfer to the four-star Hotel Lotte (or another leading hotel) for a one-night stay and a **final farewell dinner.**

Meals: B, L, D – Lotte Hotel or similar



Day Fifteen, Thursday, February 27

Vladivostok

Breakfast at the hotel before transfers to the airport brings the journey to a close.

Meals: B

Please note that this Winter Wonderland program always operates as small group departures (normally less than 40 guests, compared to up to 80 on summer departures). Reduced numbers mean more intimate groups and a shorter formation of Golden Eagle sleepers with a restaurant appropriate to the number of guests. Russian Railways attach Golden Eagle carriages to the rear of a regular train each day. However, as there is no connection between Golden Eagle carriages and the main train, travelers' on board experience will be unaffected.



About The Golden Eagle Train

Train Accommodations

Three styles of accommodation are available on board the luxury *Golden Eagle*: Imperial Suites, Gold Class and Silver Class, each with private en suite facilities. Imperial Suites feature a king size bed, while Gold and Silver Class cabins are furnished with an upper/lower berth configuration.

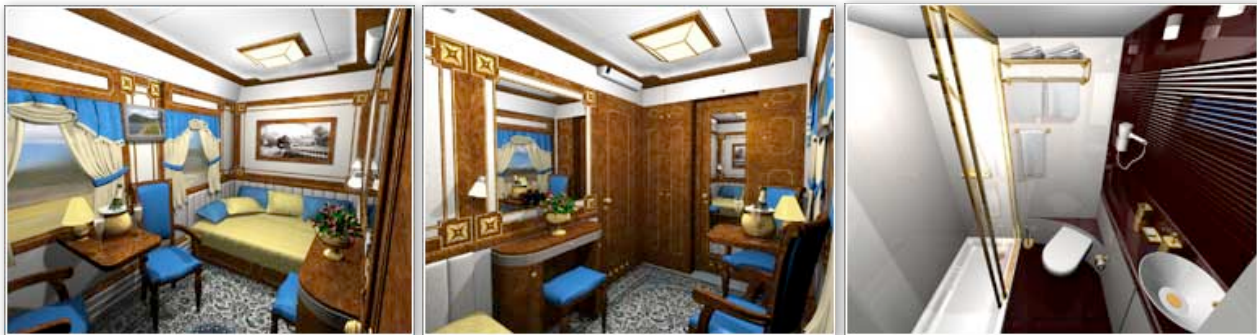
Imperial Suites

Imperial Suite cabins are the most beautiful and spacious cabins available onboard the *Golden Eagle*. Measuring a surprising 120 sq ft (11.1 sq meters), they are furnished with a luxurious king size bed, dedicated seating area, dressing table and private en suite facilities with large power shower and under floor heating. Individual air-conditioning, wardrobe, DVD/CD player with LCD screen and two large picture windows make the cabin a pleasant retreat. Imperial Class guests also enjoy butler service, a selection of complimentary drinks from the premium bar list, laundry service and room upgrades at hotels. Limited availability.

Imperial Suite Cabins:

- 120 sq ft (11.1 sq meter)
- Sleeps 2 in king size bed (width: 5ft, length: 6ft 2in)
- Sitting area
- In cabin dining options
- Remote controlled air-conditioning and heating
- Recessed lighting and wardrobe
- Dressing table
- Personal safe
- Minibar
- Private en suite bathroom with full power shower and under floor heating
- Bathrobes, slippers and toiletries
- DVD/CD player with LCD screens
- Towels and linens changed daily
- Complimentary tea, coffee and mineral water available at all times
- Dedicated butler service
- Drinks from the Bar Car included from the Standard and Premium Bar List (excluding Premium Wine List)
- Laundry service included
- Hotel room upgrade to next available category
- 1 cabin per carriage (plus 3 Gold cabins)

Note: cabin configurations and decor may vary from samples depicted

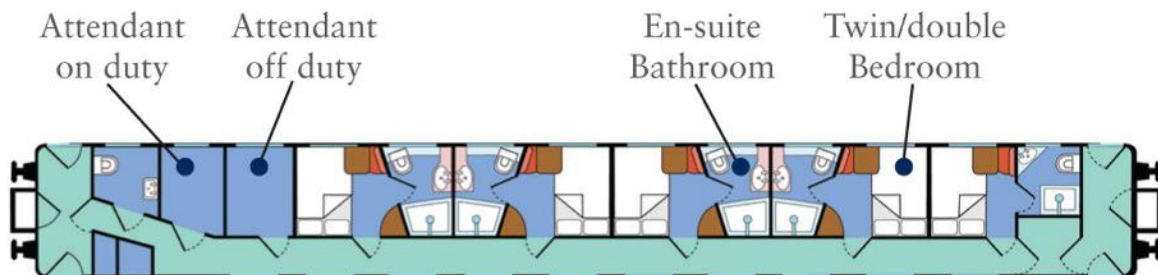


Gold Class

Gold Class cabins are well-proportioned and feature modern en suite amenities including power showers, under floor heating, a DVD/CD player, LCD screen, remote-controlled air-conditioning/heating, recessed lighting, a wardrobe and a personal safe. Each cabin is configured with upper/lower berths and can accommodate double, twin or single occupancy.

Gold Class Cabins:

- 77 sq ft (7 sq meters)
- Sleeps 2 in either lower standard (width: 4ft 5in) double bed or bunk style
- Remote controlled air-conditioning and heating
- Recessed lighting and wardrobe
- Personal safe
- Private en suite bathroom with full power shower and under floor heating
- DVD/CD player with LCD screens
- Towels and linens changed regularly
- Complimentary tea, coffee and mineral water in cabin
- Drinks from the Bar Car included from the Standard Bar List
- Laundry service available for a fee
- 5 cabins per carriage (Note: The 5th compartment is of a slightly different layout – 68 sq ft – and will normally be allocated to single guests.)



GOLD CLASS FLOOR PLAN



DAY



NIGHT

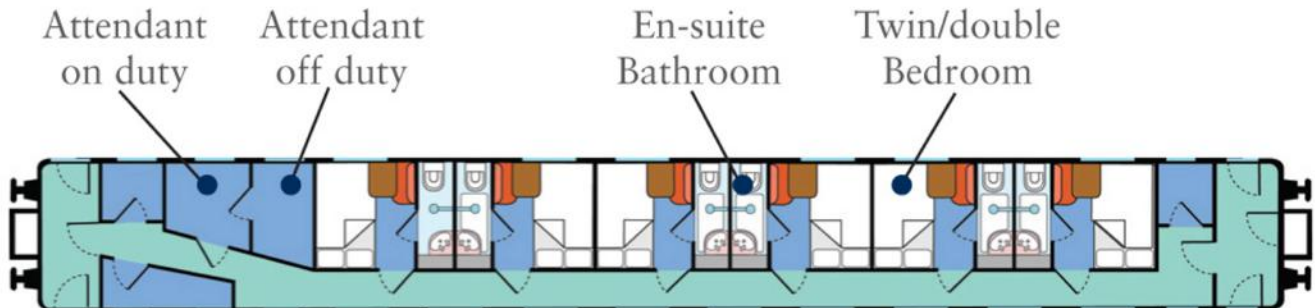


Silver Class

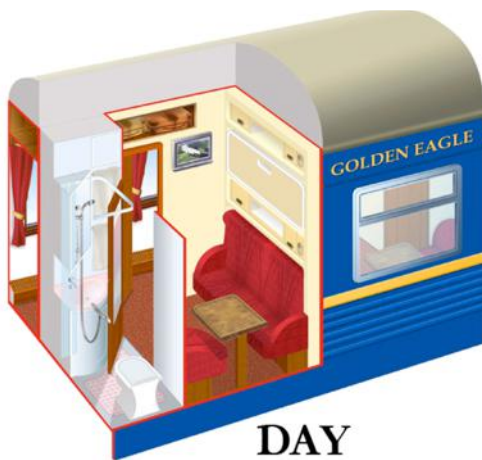
Silver Class cabins are smaller than Gold Class cabins but still have en suite facilities, though with a smaller shower area. Silver Class cabins feature the same amenities as Gold Class cabins but in a smaller space. Each Silver Class Sleeping Car has six two-bedded cabins, accommodating a maximum of 12 passengers per car.

Silver Class Cabins:

- 60 sq ft (5.5 sq meters)
- Sleeps 2 in lower small double bed (width: 3ft 6in) or bunk style
- Remote controlled air-conditioning and heating
- Recessed lighting and wardrobe
- Personal safe
- Private en-suite bathroom with “wet-room” style shower and toilet
- DVD/CD player with LCD screens
- Towels and linens changed regularly
- Complimentary tea, coffee and mineral water in cabin
- Laundry service available for a fee
- 6 cabins per carriage



SILVER CLASS FLOOR PLAN



DAY



NIGHT



Dates for 2020 – Private Rail Journey

The land itinerary is scheduled to operate on the following dates. Please note that you need to depart the U.S. at least one day prior to the tour start date, due to airline flight schedules.

February 13-27, 2020

Note: this train also runs westbound from Vladivostok to Moscow. 2020 westbound departure dates are: February 25-March 10, 2020

2020 Package Prices

Land Tour Cost – Per Person:

Silver Class, twin share	\$18,195
Silver Class, single	\$26,695

Gold Class, twin share	\$21,995
Gold Class, single	\$33,195

Imperial Suite, twin share	\$38,195
Imperial Suite, single	\$76,295

Please note, special scheduling and timing considerations may apply to this winter program; please call for more information on timings in the tour start and end cities before finalizing your airfare.

Private Train Tour Deposits – Per person:

Silver Class deposit	\$2,500
Gold Class deposit	\$3,000
Imperial Suite deposit	\$5,500

A non-refundable deposit and completed reservation form/signed release are required to hold space.

Land Tour Includes

- Accommodation aboard the *Golden Eagle Trans-Siberian Express* private train.
- Hotel accommodation per the itinerary (1 night in Moscow and 1 in Vladivostok).
- All meals starting with dinner on Day 1 until breakfast on final tour day.
- A generous allowance of wine or local beer, soft drinks and water with all lunches and dinners.
- Complimentary tea, coffee and mineral water round the clock from your car attendant while on board the train.
- Complimentary draft beer in the Bar Car for all passengers.
- Arrival/departure transfers, provided you arrive and depart on the tour start/end dates and in the tour start/end cities.
- All guided off-train tours per itinerary.
- The services of an experienced Train Tour Manager, with local guides for scheduled off-train touring.
- All gratuities.
- Baggage handling.



Not Included

- International airfare or surface transport to the point of joining/leaving the tour. MIR is able to arrange your air itinerary in economy or business class. If you wish to obtain an air quote, please contact us for details.
- Items of a purely personal nature (laundry, telephone, bar account, photography at museums, etc.)
- Optional pre- or post-tour extensions.
- Drinks, beyond draft beer in the Bar Car, and beer and wine at set meals.
- Visa fees, any excess baggage charges, airport departure taxes, vaccination or medical costs.
- Travel and trip cancellation insurance.

Interested in travel insurance?

To learn more about all the benefits of purchasing a Travel Guard travel insurance plan, please visit www.travelguard.com/mircorp or contact Travel Guard at 1.877.709.5596.

Start Planning Next Year Now

Dates for 2021 – Rail Journey by Private Train

At the time of writing, the land itinerary for this program next year is projected to be generally as depicted for this year. Next year's dates are shown below – please call if you're ready to book now.

February 13-27, 2021

Package Prices – 2021

Land Tour Cost – Per Person:

Silver Class, twin share	\$18,995
Silver Class, single	\$28,495

Gold Class, twin share	\$22,895
Gold Class, single	\$37,995

Imperial Suite, twin share	\$39,795
Imperial Suite, single	\$79,495

Please note, special scheduling and timing considerations may apply to this winter program; please call for more information on timings in the tour start and end cities before finalizing your airfare.

Private Train Tour Deposits – Per person:

Silver Class deposit	\$2,500
Gold Class deposit	\$3,000
Imperial Suite deposit	\$5,500

A non-refundable deposit and completed reservation form/signed release are required to hold space.



Rail Journey by Private Train

Private Train tours are in a class of their own, offering the opportunity to experience remote destinations in unparalleled style. These all-inclusive, overview tours aboard the fully-chartered *Golden Eagle* luxury private train bring together passengers from around the world. Group sizes are flexible and can be more than 100 passengers.

Important Notes: Is This Trip Right For You?

- This trip is moderately active, and rated **moderate to rigorous** touring due to the daily walking involved and the overall shortcomings of the tourism infrastructure. To reap the full rewards of this adventure, travelers must be able to walk at least a mile a day, keeping up with fellow travelers. Flexibility, a sense of humor and a willingness to accept local standards of amenities and services are essential components to the enjoyment of this trip.
- This itinerary features a significant amount of touring on foot. Many streets and sidewalks are uneven, and some attractions are only accessible via steep staircases. Museums generally do not have elevators.
- On the train, restaurant and bar cars may be some distance from your sleeping car. Although portage is provided where possible, you may have to carry your baggage for short distances.
- Passengers may encounter problems getting on and off trains; there may be low platforms, steep steps and/or gaps between the platform and the train.
- In true expedition style, some delays or changes in the itinerary are likely.

Are You Prepared?

A Travel Guard travel insurance plan can help cover your vacation investment, offset expenses from travel mishaps and provide you with emergency travel assistance. To learn more about all of the benefits of purchasing a Travel Guard travel insurance plan, please visit www.travelguard.com/mircorp

If you are not already enrolled in STEP, Smart Traveler Enrollment Program, a free service to enroll your trip with the nearest U.S. Embassy or Consulate, please consider enrolling. For more information: <https://step.state.gov/step/>

Please read the U.S. State Department's Travel Advisory on travel to Russia here: <https://travel.state.gov/content/travel/en/traveladvisories/traveladvisories/russia-travel-advisory.html>

Please read the U.S. State Department's Travel Advisory on travel to Mongolia here: <https://travel.state.gov/content/travel/en/traveladvisories/traveladvisories/mongolia-travel-advisory.html>

Weather

The climate of **Western Russia** is a rather severe **continental climate**, cold in winter and hot in summer. As with traveling anywhere, it is best to bring layers of different weights and thickness to keep you comfortable. In the winter and spring months, a warm coat, hat and gloves will come in handy, and a pair of boots that will withstand wet snow or rain.

Siberia and the Russian Far East encompass an enormous area that includes arctic tundra, alpine tundra, *taiga* and continental and maritime forests. These regions are typified by a wide variety of climatic conditions.

Siberia has a **continental climate** that can be summarized as hot in the summer and frigid in the winter. The arctic tundra (northern Siberia) is the coldest part of the region and has a short but vigorous



summer. The summer is cool and the winter is extremely cold. In southern Siberia, summers can be hot with temperatures exceeding 100 degrees Fahrenheit. Siberian winters are quite cold.

The **Russian Far East** is moderated by its **maritime climate**. This leads to warmer temperatures in the winter and cooler temperatures in the summer, with the effect most prevalent near the coast. Inland, the climate becomes more typically continental. In winter, even along the coast, dress for extreme cold.

Please remember, weather at all times of year has an element of the unpredictable. This information comes from weatherbase.com and is based on data from previous temperatures on record. It is always advisable to check with weatherbase.com closer to your departure date for current conditions and forecasts for the specific region you will be visiting.

International Airfare

MIR's in-house, full-service air department is available to assist with your air travel needs. Check with MIR before booking air on your own, as we are happy to research and compare the best published fares available. Airfare varies depending on a wide variety of factors, such as dates of travel, seat availability, special airline promotions, how restrictive ticket changes are, how long the fares can be held without purchase, routing considerations such as stopovers, and more. Tour dates are based on the land tour only. Please call us at 1-800-424-7289 for further details and for assistance with custom air reservations from your preferred departure city.

Visas

A **double-entry** Russian visa is required for this tour. Extensive pre-tour paperwork is necessary to obtain a Russian visa. MIR will provide you with the necessary applications and instructions.

An estimate of current visa costs for U.S. passport holders, based on standard processing time, is \$312. Your exact visa fees may differ as visa costs can depend on a number of factors, such as state of residence, processing time, and return shipping. Visa fees are always subject to change. At the time of writing, the Russian Embassy is offering U.S. passport-holders three-year multiple-entry visas at the same price as single- or double-entry visas (the \$312 estimated above). Travelers who need to expedite their processing may not have the same option of getting the multi-entry visa at the single-entry visa cost. Please call for information.

Standard visa processing in the Russian visa section is ten to fifteen days for this tour. Travelers should prepare to be without their passports for that amount of time. If you plan to travel extensively in the time leading up to your MIR tour, you may need to obtain a second valid passport or use expedited processing, depending on your plans. Please contact us with any questions you may have regarding the timeline for visa processing.

In the past some travelers have made their own visa arrangements instead of using MIR's preferred provider for their visa processing; either using their own visas service or attempting to process directly with the embassies/consulates. We strongly recommend you discuss it with us before choosing an alternate visa processing method, to help avoid difficulties and visa problems. **In the event that you plan to process visas without going through MIR's preferred provider, please contact us first so we can pass you detailed instructions with critical trip-specific information.**



Pre and Post-Tour Extensions

MIR can arrange for an extended program in St. Petersburg, Moscow, Eastern or Central Europe before or after your tour. Suggested extensions include:

St. Petersburg – available year-round

St. Petersburg is often described as one of the most beautiful cities in the world. Its miles of canals, laced together with graceful bridges set amidst 18th century buildings, have earned it the name “Venice of the North.” Explore the Hermitage Museum and the grand estates of czars Peter and Catherine.

Contact us for pricing and more details.

Also Nearby...

For more tours to this region, you may want to check out:

Flexible Essential Trips – Classic Private Journeys

Essential Russia, 7 days. A compact and compelling survey of Russia’s political capital, Moscow, and its cultural capital, St. Petersburg, this tour communicates the character of Western Russia in a succinct and meaningful series of experiences.

Essential St. Petersburg, 7 days. St. Petersburg, home of the czars and their courts, is a rich repository of extravagant palaces, brilliant museums and renowned theaters overflowing with music and dance. Its fashionable boulevards and serene canals glisten in the “White Nights” of summer and dazzle on sunny winter days.

Essential Poland, 6 days. On this focused tour, visit four Polish UNESCO sites in six days – Warsaw’s Old Town, Krakow’s Historic Center, the Auschwitz/Birkenau camp and the Wieliczka Salt Mine.

Essential Balkans, 14 days. Visit seven Balkan countries in 14 days on this compact overland journey through history. A remarkably complex region, the mountainous Balkan Peninsula is fascinating, diverse and incredibly beautiful.

Essential Caucasus, 10 days. Armenia’s intricate stone *khachkar* crosses, the bounteous wines of Georgia and the ancient petroglyphs of Azerbaijan are icons of these three intertwined Caucasus countries, where you can experience five UNESCO masterpieces in ten days.

Essential Ukraine, 8 days. Ukraine is the new borderland between Europe and Russia. Explore this resilient region influenced by Polish princes, Cossack *hetmen*, Turkish khans, Russian communists and Ukrainian poets and nationalists.

Conditions of Participation

Your participation on a MIR Corporation trip is subject to the conditions contained in the 2020 Tour Reservation Form and Release of Liability and Assumption of Risk Agreement. Please read this document carefully and contact us with any questions.



Cancellation and Refund Policy

Please note that no partial refunds are available for any missed days of a tour or any whole or part of a tour, accommodation, meal or any other service not utilized by the participant during the tour. The quoted price represents a package price for the services offered and an itemization of individual component costs will not be provided. Please understand there will be no exceptions to our cancellation policies regardless of your situation. Should you need to cancel your travel plans, please notify us in writing immediately. At the time we receive written notification of cancellation, the following charges apply:

Scheduled Rail Journeys by Private Train:

121 or more days prior to departure-----deposit due or paid in full of \$2,500, \$3,000 or \$5,500

65-120 days prior to departure-----50% of the land tour cost

64 days prior to departure or after trip departure----no refund

References

We encourage you to speak directly with satisfied past travelers. Please request a list of references.

Why MIR?

Regional knowledge is crucial to the success of any trip to our corner of the world. MIR combines detailed information about geography and infrastructure, history and art, language and culture, with the depth of knowledge that comes only from decades of regional experience. You may wonder how we differ from other tour operators...

Destination Specialization

MIR focuses exclusively on the exceptional region at the crossroads of Europe and Asia. This area has been our overriding passion since 1986; we don't do the rest of the world. Our hard-earned expertise gained over the last three decades can take you from end to end of the largest country in the world – Russia – and to all of its neighbors. We specialize in travel to Siberia, the Silk Route, St. Petersburg & Beyond. Our destinations include: Russia, Ukraine, Belarus, Moldova, the Baltics (Estonia, Latvia, Lithuania), the Balkans (Albania, Bosnia and Herzegovina, Croatia, Kosovo, Montenegro, North Macedonia, Serbia, Slovenia), Central Asia (Kazakhstan, Kyrgyzstan, Tajikistan, Turkmenistan, Uzbekistan), the South Caucasus (Armenia, Azerbaijan, Georgia), Turkey, Mongolia, China, Tibet, and Central/East Europe (Bulgaria, Czech Republic, Hungary, Poland, Romania, Slovakia).





30 Years of Experience

A travel company doesn't last more than 30 years in the business without a solid track record. MIR has helped thousands of individuals achieve their travel goals. Our dedication and experience have earned us their trust and the trust of many well-respected institutions. Today MIR is the preferred tour operator for museum, alumni and special interest organizations across the country.

Recommended & Respected

MIR has twice been rated one of the "Best Adventure Travel Companies on Earth" by *National Geographic Adventure*. Several of our tours have won awards in top travel publications, such as *Outside* magazine and *National Geographic Traveler*. Our trips have been featured in books like *Riding the Hula Hula to the Arctic Ocean* and *1,000 Places to See Before You Die*.


More Questions?

Please feel free to call us with questions at 1-800-424-7289, 8:30am-5:30pm Pacific Time.

MIR Corporation
 85 South Washington Street, Suite 210
 Seattle, WA 98104
 800-424-7289, 206-624-7289
 Fax 206-624-7360
 info@mircorp.com
 www.mircorp.com

Sellers of Travel: Washington#601-099-932, California# 2082306-40

© Photos: MIR Corporation, GW Travel, Mark Stephenson, Helge Pedersen, Vladimir Kvashnin, Jonathan Irish, Jered Gorman

MIR and the MIR logo  are trademarks of MIR Corporation.

